



coronet Scaffold
Building Future!



RINGLOCK SYSTEM

North America

WE
PROVIDE
SCAFFOLDING
GLOBALLY.

2023

CORONET

TABLE OF CONTENTS

2023



INTRODUCTION 02

OVERVIEW 03-05

RINGLOCK 06-43

RINGLOCK Standard	06
RINGLOCK Ledger O-Type	07-08
RINGLOCK Truss Ledger O-Type	09
RINGLOCK Transoms MID Transom O-Type	10
RINGLOCK Ledger to Plank Transoms O-Type	11
RINGLOCK Plank to Plank Transoms O-Type	12
RINGLOCK Braces	13-14
RINGLOCK Brackets	15-16
RINGLOCK	17-19
Work Platforms	20-21
Access & Egress	22
Safety Gate	23
Adjustable Base Jack	24
Swivel Base Jack	25
Adjustable Caster Adapert	26
12" Caster Wheel	27
Starter/ Base Collar	28
Staircase and Steps	29
Stair Tread	30
Interlocking Toeboard	31
Ladder	32
Ladder Bracket	33
RINGLOCK Accessories	34-43

ABOUT

CORONET



Founded in 2004, Coronet has its headquarters in Suzhou, China, subsidiary in L.A, USA. We have evolved from a small scaffold company in 2004 to one of the largest and most successful and qualified scaffolding companies in China. We have worked diligently and successfully together for the past 19 years to make Coronet Scaffold the success it is today, and look forward to Coronet's continued growth and success, going forward into more scaffolding sales and innovations.



OVERVIEW

Coronet Quality

[MATERIAL]

We only use the high quality steel in our products. Our steel facilities in Southern China (Near Shanghai) which is known for the quality of its steel and workmanship.

[WELDING]

Our welding process monitoring and control involves routine or continuous monitoring of process variables, particularly current, time and force.

[FINISHING]

Frame productions are finished and protected by hot-dipped zinc galvanizing or powder coated. This method of finishing maximizes surface durability.

[TRACEABILITY]

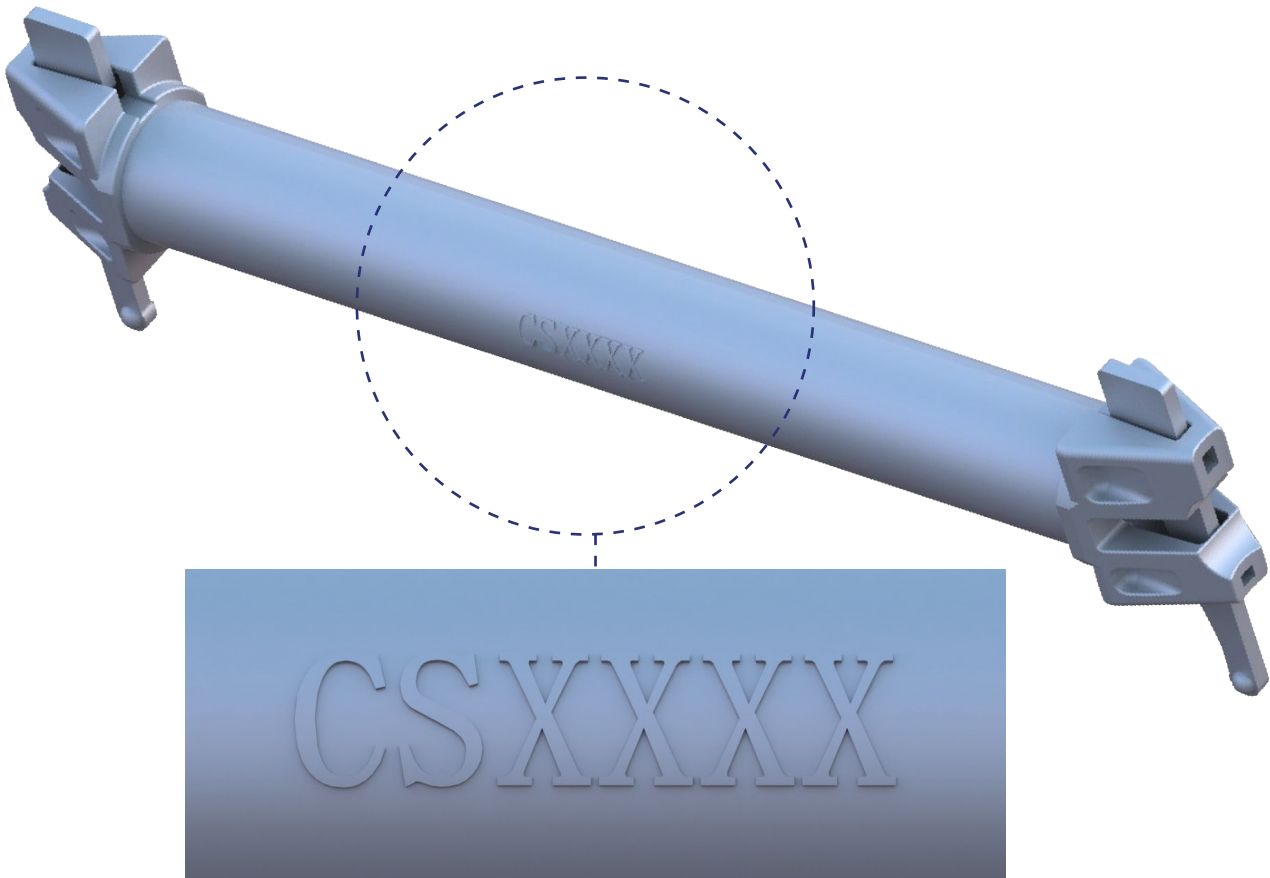
Traceability imprinted code on all frames for quality assurance.

OVERVIEW

Product Traceability

All coronet componets are stamped with traceability marks.

KEY | Batch Number : CS X XXX
CS= Coronet Scaffold X= Year of Manufacture XXX= Order Number

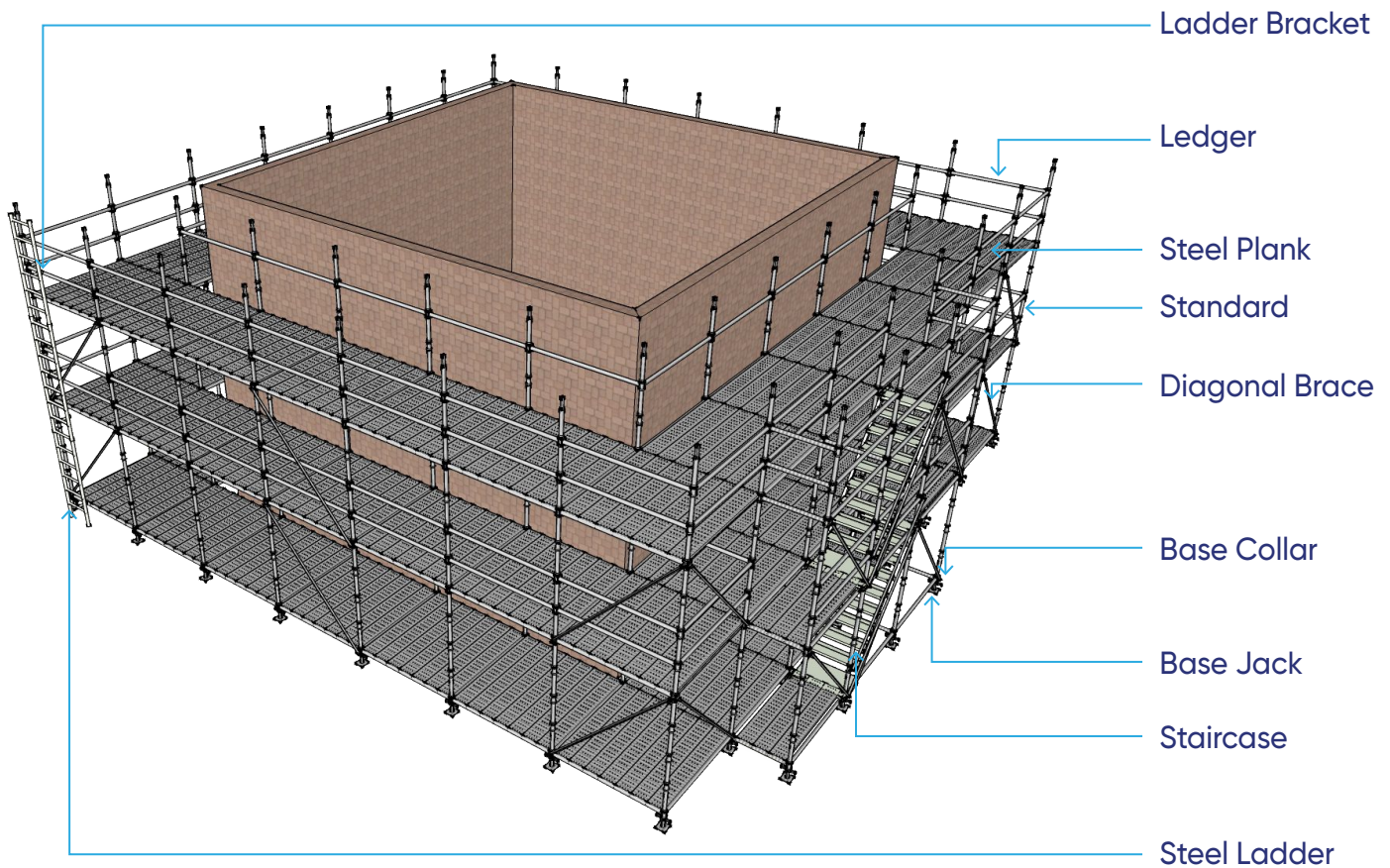


OVERVIEW

Component

Component Identification

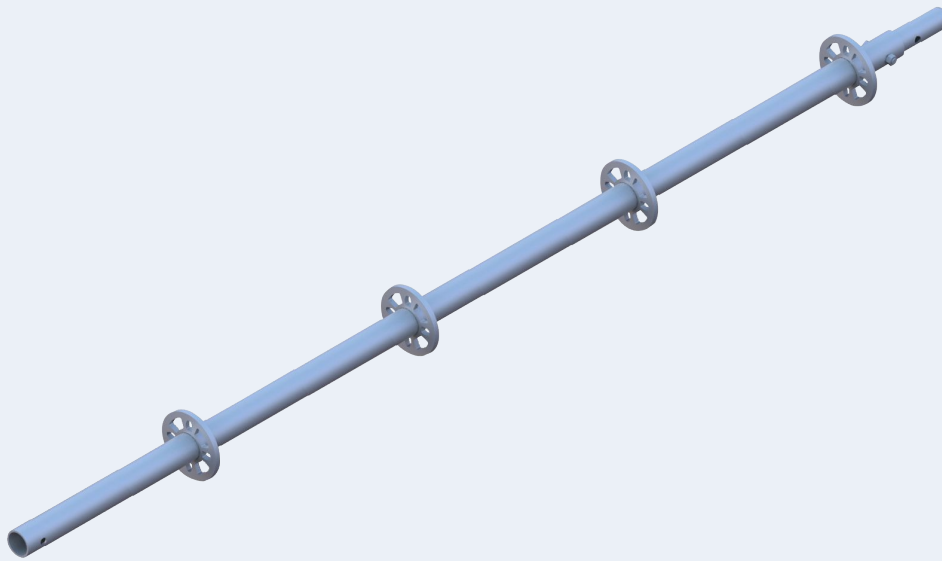
The following diagram represents the most common Ringlock components used. Most scaffold structure are made from these basic components yet the Ringlock system comes with a variety of accessories for all your scaffolding requirements.



RINGLOCK

Ringlock Standard

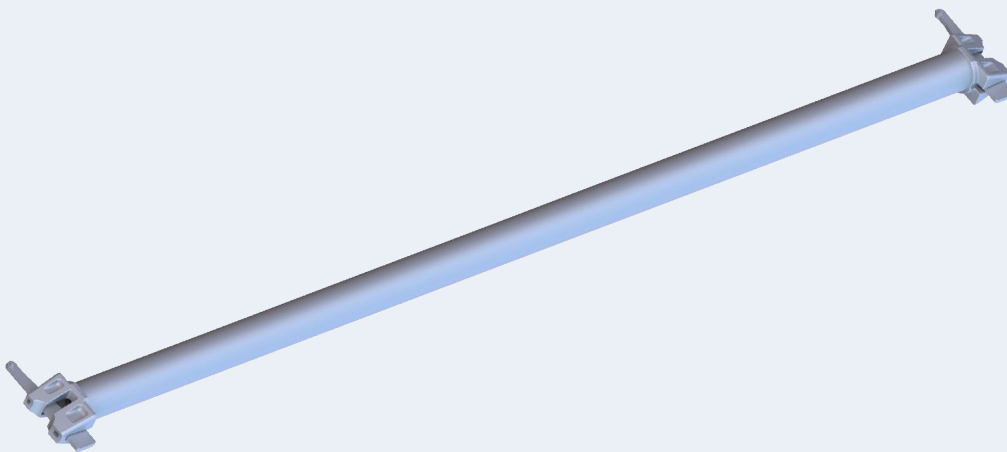
Ringlock Standard(Vertical) has rosettes at 500mm interval, Tube size: OD48.3x3.2mm, Steel Grade:S235 or S355. Surface treatment: Hot dip galvanized.



Item No.	Description	Height		Weight (kgs)		Packaging	
		Meters	Feet	Kgs	Lbs	Qty.	Type
RV99	6 Ring Standard 3.0m w/ spigot	3.0	9'-9"	14.56	32.07	100	Rack
RV82	5 Ring Standard 2.5m w/ spigot	2.5	8'2"	12.26	27.00	100	Rack
RV66	4 Ring Standard 2.0m w/ spigot	2.0	6'-6"	9.95	21.92	100	Rack
RV411	3 Ring Standard 1.5m w/ spigot	1.5	4'-11"	7.65	16.85	100	Rack
RV33	2 Ring Standard 1.0m w/ spigot	1.0	3'-3"	5.34	12.10	100	Rack
RV18	1 Ring Standard 0.5m w/ spigot	0.5	1'-8"	3.04	6.70	200	Rack

Ringlock Ledger O-Type

Ringlock Horizontal, Tube size: OD48.3x3.2mm, Steel Grade:S235 or S355. Surface treatment: Hot dip galvanized.

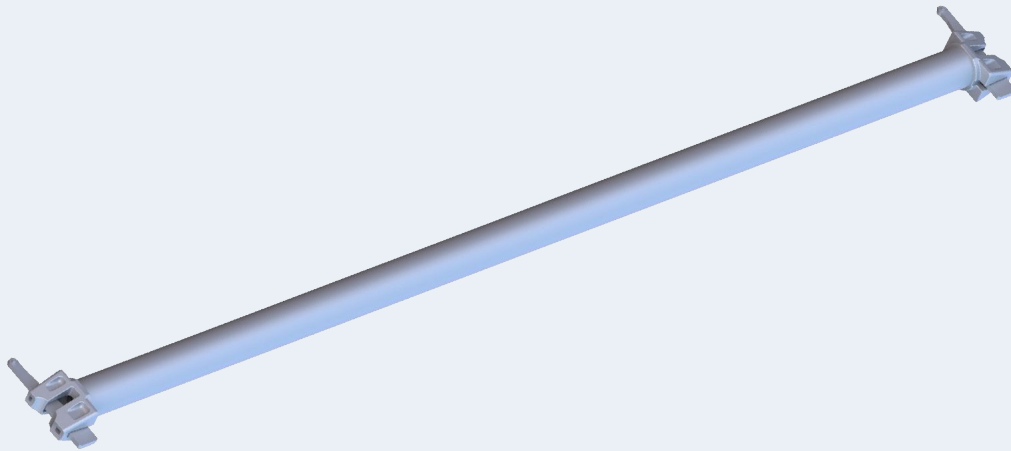


Item No.	Description	Height		Weight (kgs)		Packaging	
		Meters	Feet	Kgs	Lbs	Qty.	Type
RH10	1' Ledger O-Type 300mm	0.30	1'	1.65	3.63		Rack
RH20	2' Ledger O-Type 610mm	0.60	2'-0"	2.83	6.23	300	Rack
RH22	2'-2" Ledger O-Type 650mm	0.65	2'-2"	2.89	6.37	300	Rack
RH210	2'-10" Ledger O-Type	0.88	2'-10 5/8"	3.71	8.17	300	Rack
RH30	3' Ledger O-Type 914mm	0.91	3'-0"	3.83	8.44	300	Rack
RH36	3'-6" Ledger O-Type 1065mm	1.065	3'-6"	4.37	9.63	150	Rack
RH310	3'-10" Ledger O-Type 1150mm	1.15	3'-10"	4.67	10.29	150	Rack
RH40	4'-0" Ledger O-Type 1220mm	1.22	4'	4.92	10.84	150	Rack
RH43	4'-3" Ledger O-Type 1286mm	1.28	4'-3"	5.22	11.50	150	Rack
RH410	4'-10" Ledger O-Type 1484mm	1.484	4'-10"	5.95	13.11	150	Rack
RH50	5'-0" Ledger O-Type 1520mm	1.52	5'-0"	6.0	13.22	150	Rack

RINGLOCK

Ringlock Ledger O-Type

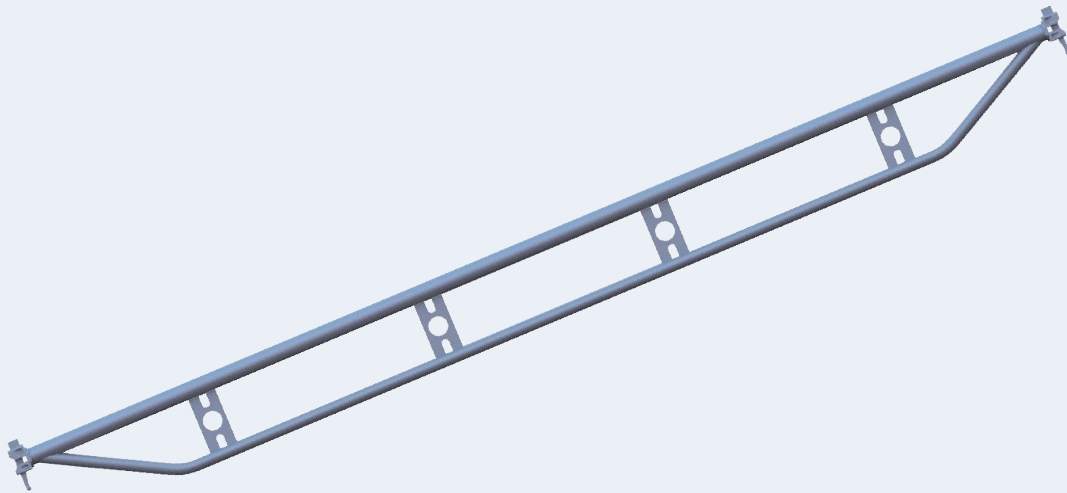
Ringlock Horizontal, Tube size: OD48.3x3.2mm, Steel Grade:S235 or S355. Surface treatment: Hot dip galvanized.



Item No.	Description	Height		Weight (kgs)		Packaging	
		Meters	Feet	Kgs	Lbs	Qty.	Type
RH52	5'-2" Ledger O-Type 1572mm	1.57	5'-2"	6.17	13.59	150	Rack
RH54	5'-4" Ledger O-Type 1625mm	1.625	5'-4"	6.35	13.99	150	Rack
RH60	6'-0" Ledger O-Type 1828mm	1.82	6'-0"	7.08	15.59	150	Rack
RH69	6'-9" Ledger O-Type 2072mm	2.072	6'-9"	7.96	17.53	150	Rack
RH70	7'-0" Ledger O-Type 2130mm	2.13	7'-0"	8.15	17.95	150	Rack
RH80	8'-0" Ledger O-Type 2440mm	2.44	8'-0"	9.25	20.37	150	Rack
RH86	8'-6" Ledger O-Type 2572mm	2.572	8'-6"	9.94	21.89	150	Rack
RH90	9'-0" Ledger O-Type 2743mm	2.743	9'	10.32	22.73	150	Rack
RH100	10'-0" Ledger O-Type 3050mm	3.05	10'	11.42	25.15	150	Rack

Ringlock Truss Ledger O-Type

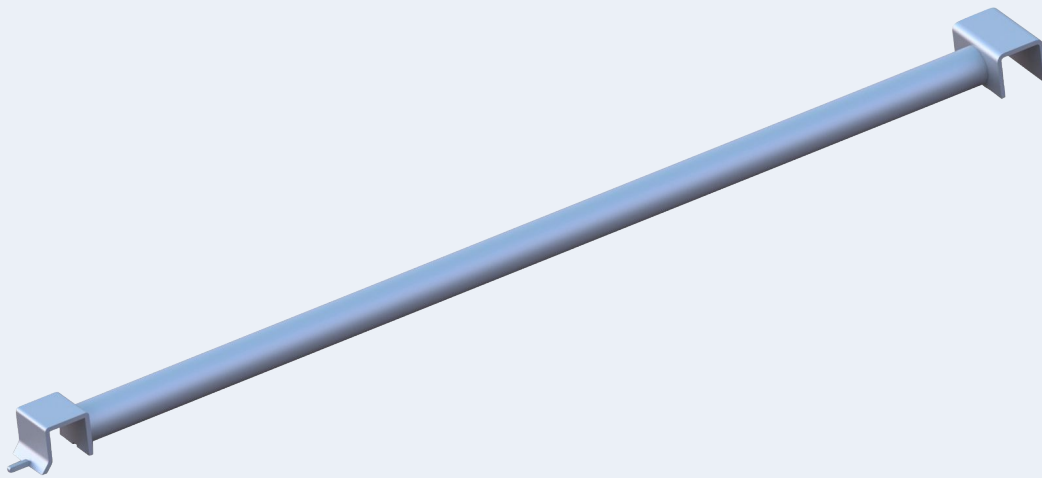
The Truss Ledger is engineering to enable higher service loads to the working platform. Tube size: OD48.3x3.2mm, Steel Grade:S235 or S355. Surface treatment: Hot dip galvanized.



Item No.	Description	Height		Weight (kgs)		Packaging	
		Meters	Feet	Kgs	Lbs	Qty.	Type
RDL50	5' Truss Ledger 1570mm	1.52	5'-0"	9.28	20.44	60	Rack
RDL52	5'-2" Truss Ledger 1570mm	1.57	5'-2"	9.48	20.88	60	Rack
RDL60	6' Truss Ledger 1820mm	1.82	6'-0"	11.36	25.02	60	Rack
RDL70	7' Truss Ledger 2130mm	2.13	7'-0"	13.42	29.56	60	Rack
RDL80	8' Truss Ledger 2440mm	2.43	8'-0"	15.16	33.39	60	Rack
RDL90	9' Truss Ledger 2740mm	2.74	9'-0"	17.24	37.97	60	Rack
RDL100	10' Truss Ledger 3050mm	3.05	10'-0"	19.34	42.60	60	Rack

Ringlock Transoms MID Transom O-Type

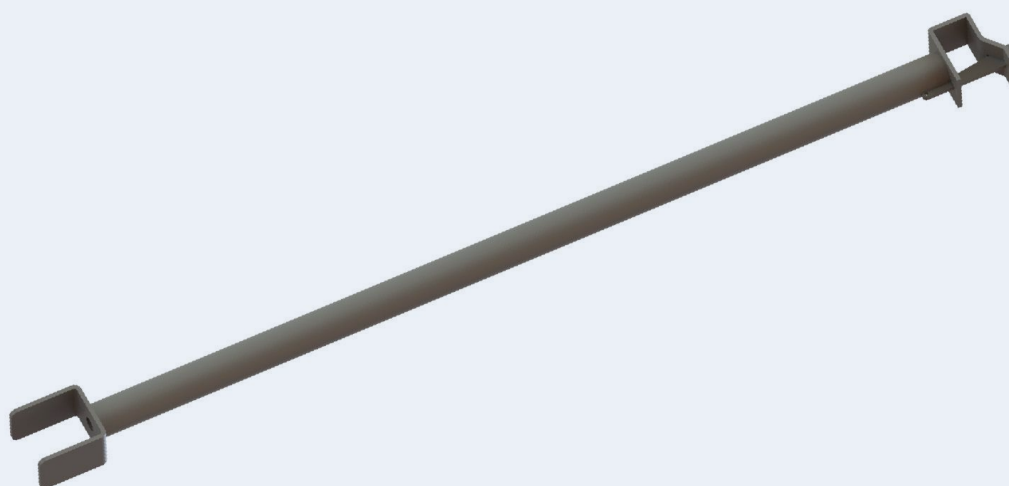
The Mid Transom is designed to create a transom at the plank level anywhere inside of a bay by straddling the outer Ledgers / Transoms of a bay. Tube size: OD48.3x3.2mm, Steel Grade: S235 or S355. Surface treatment: Hot dip galvanized.



Item No.	Description	Height		Weight (kgs)		Packaging	
		Meters	Feet	Kgs	Lbs	Qty.	Type
RMT22	2'2" Mid Transomer O-Type 650mm	0.65	2'-2"	3.52	7.75	320	Rack
RMT210	2'-10 5/8" Mid Transom O-Type 880mm	0.88	2'-10"	4.34	9.56	160	Rack
RT30	3' Mid Transom O-Type 910mm	0.91	3'-0"	4.45	9.80	160	Rack
RMT36	3'6" Mid Transomer O-Type 1065mm	1.065	3'-6"	5.09	11.21	160	Rack
RMT310	3'10" Mid Transomer O-Type 1150mm	1.15	3'-10"	5.3	11.67	160	Rack
RMT52	5'2" Mid Transomer O-Type 1570mm	1.57	5'-2"	6.81	15.00	160	Rack
RMT60	6' Mid Transomer O-Type 1820mm	1.82	6'-0"	7.69	16.94	160	Rack
RMT70	7' Mid Transomer O-Type 2130mm	2.13	7'-0"	8.8	19.38	160	Rack
RMT80	8' Mid Transomer O-Type 2440mm	2.43	8'-0"	9.87	21.74	160	Rack
RMT10	10' Mid Transomer O-Type 2050mm	3.05	10'-0"	12.08	26.61	160	Rack

Ringlock Ledger to Plank Transoms O-Type

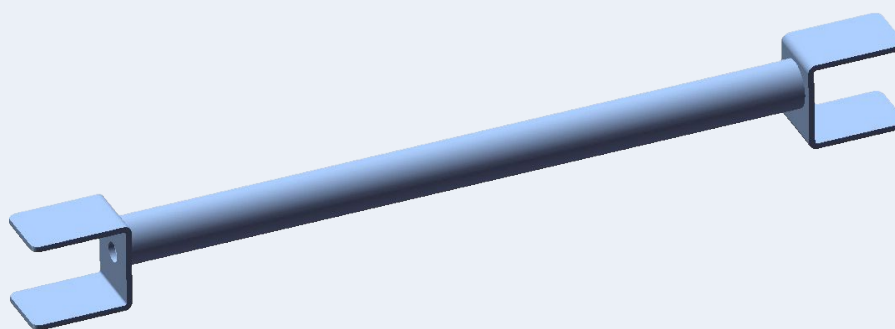
The Ledger to Plank Transom is used where ladder access opening is required on one side of the access platfor, or infill a gap in the platform. Tube size: OD48.3x3.2mm, Steel Grade: S235 or S355. Surface treatment: Hot dip galvanized.



Item No.	Description	Height		Weight (kgs)		Packaging	
		Meters	Feet	Kgs	Lbs	Qty.	Type
RLPT24	1 board Transom Ledger to Plank	0.24	10"	3.38	7.44	200	Rack+Insert
RLPT48	2 board Transom Ledger to Plank	0.48	1-7"	4.23	9.32	200	Rack+Insert
RLPT72	3 board Transom Ledger to Plank	0.72	2'-4"	5.07	11.17	200	Rack+Insert

Ringlock Plank to Plank Transoms O-Type

The Plank to Plank Transom is used where ladder access opening is required on one side of the access platfor, or infill a gap in the platform. Tube size: OD48.3x3.2mm, Steel Grade: S235 or S355. Surface treatment: Hot dip galvanized.

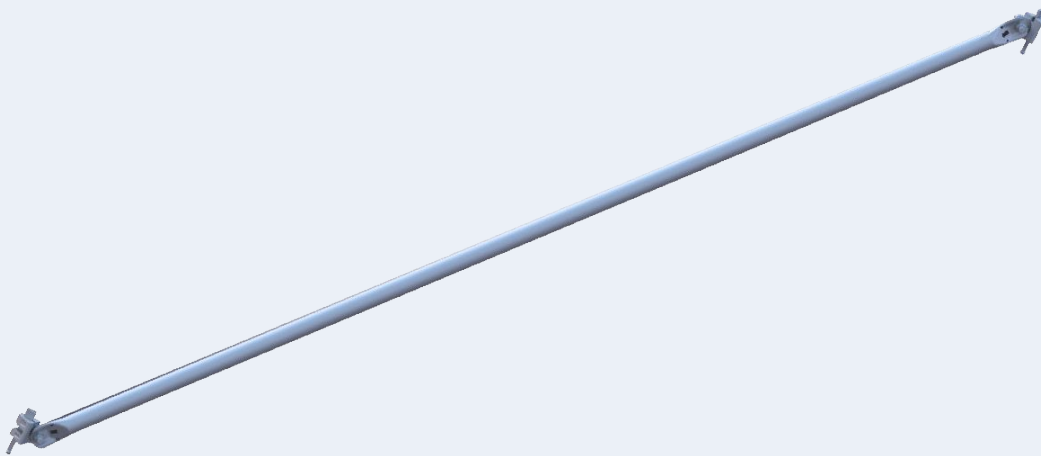


Item No.	Description	Height		Weight (kgs)		Packaging	
		Meters	Feet	Kgs	Lbs	Qty.	Type
RLPT24	1 board Transom Ledger to Plank	0.24	10"	3.67	8.08	170	Rack+Insert
RLPT48	2 board Transom Ledger to Plank	0.48	1-7"	4.55	10.02	170	Rack+Insert
RLPT72	3 board Transom Ledger to Plank	0.72	2'-4"	5.47	12.05	170	Rack+Insert

Ringlock Braces

[Bay Brace 6'-6" (2.0m) Lift]

The Bay Brace is used for the lateral bracing of Ringlock scaffolds. Tube size: OD48.3x3.2mm, Steel Grade: S235 or S355. Surface treatment: Hot dip galvanized.

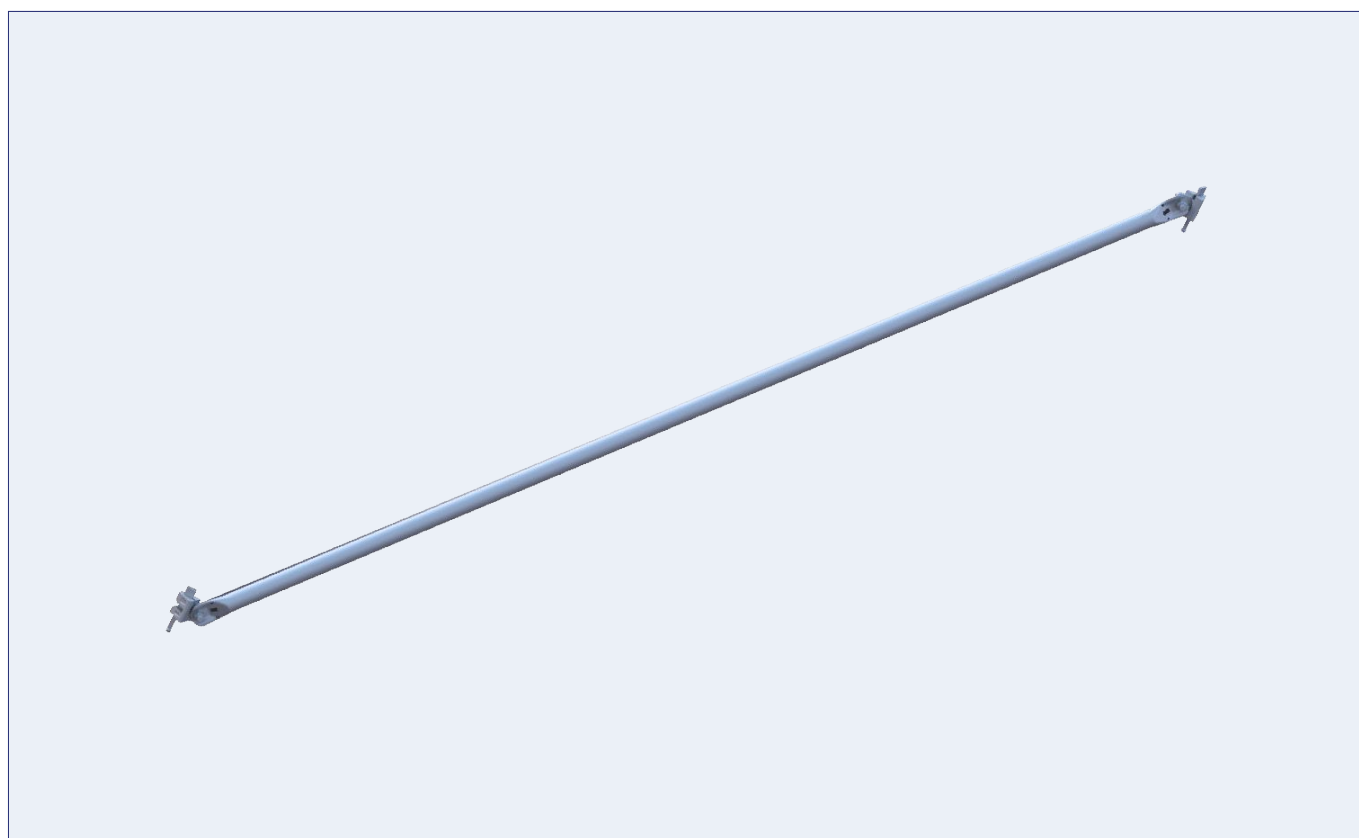


Item No.	Description	Height		Weight (kgs)		Packaging	
		Meters	Feet	Kgs	Lbs	Qty.	Type
RBR20	2'-0" Bay Brace 609mm	0.60	2'-0"	7.78	17.14	150	Rack
RBR22	2'-2" Bay Brace 650mm	0.65	2'-2"	7.81	17.20	150	Rack
RBR210	2'-10" Bay Brace 880mm	0.88	2'-10"	8	17.62	150	Rack
RBR30	3'-0" Bay Brace 910mm	0.91	3'-0"	8.04	17.71	150	Rack
RBVD36	3'-6" Bay Brace 1065mm	1.065	3'-6"	8.21	18.08	150	Rack
RBVD310	3'-10" Bay Brace 1150mm	1.15	3'-10"	8.31	18.30	150	Rack
RBVD40	4'-0" Bay Brace 1220mm	1.22	4'-0"	8.4	18.50	150	Rack
RBVD50	5'-0" Bay Brace 1520mm	1.52	5'-0"	8.86	19.52	150	Rack
RBVD52	5'-2" Bay Brace 1570mm	1.57	5'-2"	8.95	19.71	150	Rack
RBVD54	5'-4" Bay Brace 1625mm	1.625	5'-4"	9.03	19.89	150	Rack
RBVD60	6'-0" Bay Brace 1828mm	1.828	6'-0"	9.39	20.68	150	Rack
RBVD70	7'-0" Bay Brace 2130mm	2.13	7'-0"	9.98	21.98	150	Rack
RBVD80	8'-0" Bay Brace 2440mm	2.44	8'-0"	10.63	23.41	150	Rack
RBVD90	9'-0" Bay Brace 2740mm	2.74	9'-10"	11.3	24.89	150	Rack
RBVD100	10'-0" Bay Brace 3050mm	3.05	10'-0"	12.43	27.38	150	Rack

Ringlock Braces

[Swivel Clamp Brace 6'-6" (2.0m) Lift]

The Bay Brace is used for the lateral bracing of Ringlock scaffolds. Tube size: OD48.3x3.2mm, Steel Grade: S235 or S355. Surface treatment: Hot dip galvanized.



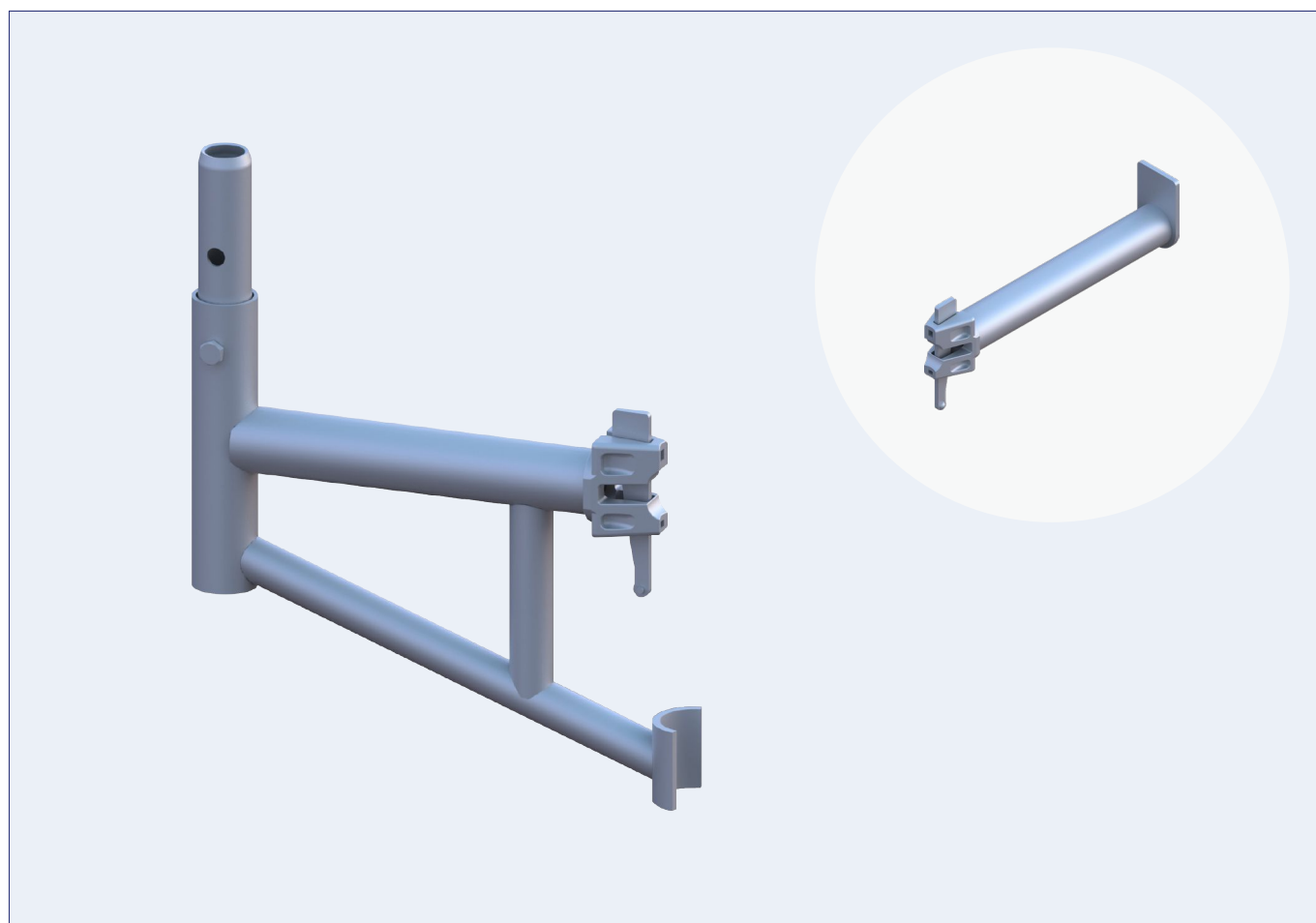
Item No.	Description	Height		Weight (kgs)		Packaging	
		Meters	Feet	Kgs	Lbs	Qty.	Type
RSCB50	5'-0" Swivel Clamp Brace 1520mm	1.52	5'-0"	7.19	15.84	150	Rack
RSCB70	7'-0" Swivel Clamp Brace 2130mm	2.13	7'-0"	9.64	21.23	150	Rack
RSCB80	8'-0" Swivel Clamp Brace 2440mm	2.44	8'-0"	10.38	22.86	150	Rack
RSCB10	10'-0" Swivel Clamp Brace 3050mm	3.05	10'-0"	11.61	25.57	150	Rack

RINGLOCK

Ringlock Brackets

[Side/Hop-up Bracket O-Type]

The side/hop-up bracket is used to extend the working platform closer to the building structure. Steel Grade: S235 or S355. Surface treatment: Hot dip galvanized.



Item No.	Description	Height		Weight (kgs)		Packaging	
		Meters	Feet	Kgs	Lbs	Qty.	Type
RSB1	Side Bracket 1 board	0.31	1"	1.752	3.86	110	Rack
RSB2	Side Bracket 2 board	0.65	2'-2"	5.72	12.60	66	Rack
RSB3	Side Bracket 3 board	0.88	2'-10 5/8"	9.4	20.70	50	Rack

RINGLOCK

Ringlock Brackets

[Side/Console Bracket O-Type]

The side/hop-up bracket is used at the edge of a scaffold to extend or widen the working platform. Steel Grade: S235 or S355. Surface treatment: Hot dip galvanized.

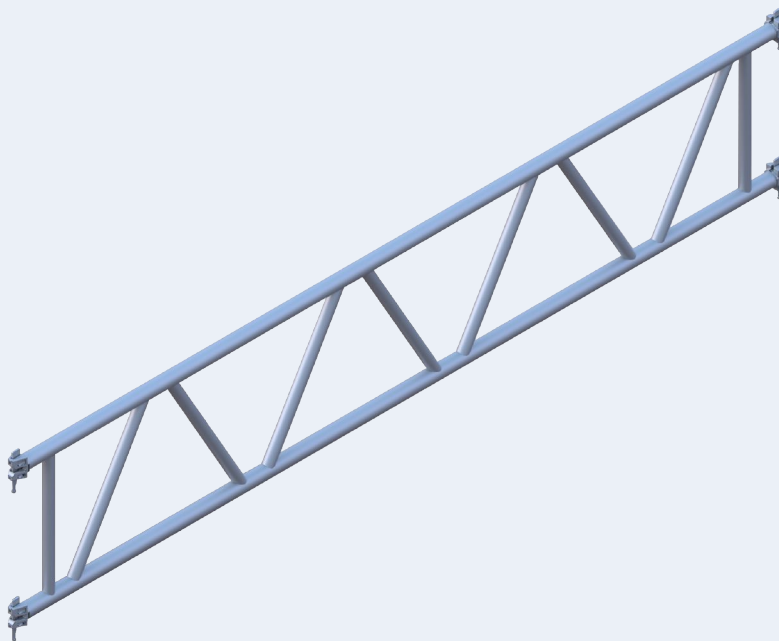


Item No.	Description	Height		Weight (kgs)		Packaging	
		Meters	Feet	Kgs	Lbs	Qty.	Type
RSB36	Side/Console Bracket O-Type	1.065	3'-6"	12.55	27.64	24	Rack
RSB37	Side/Console Bracket O-Type	1.09	3'-7"	12.74	28.02	24	Rack
RSB310	Side/Console Bracket O-Type	1.15	3'-10"	12.82	28.24	24	Rack

Lattice Girder, No Spigot 19.7" (0.5m)

The Lattice Girder is a horizontal member of Ringlock scaffolding that allows for bridging over large spans of 14'-28'.

Steel Grade: S235 or S355. Surface treatment: Hot dip galvanized.

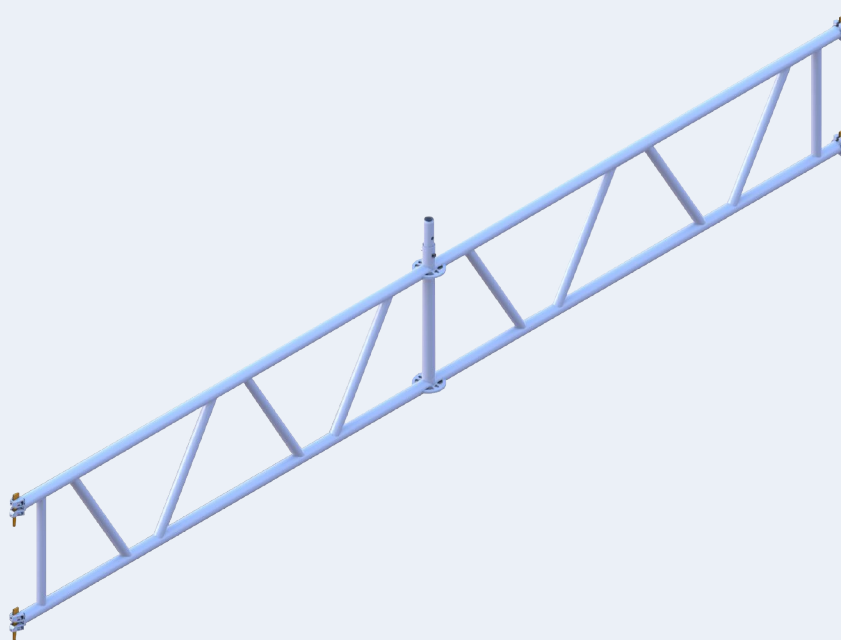


Item No.	Description	Height		Weight (kgs)		Packaging	
		Meters	Feet	Kgs	Lbs	Qty.	Type
RSLG10	Lattice Girder 10'	3.05	10'	32	70.48	20	Bundle
RSLG14	Lattice Girder 14'	4.26	14'	46.16	101.67	20	Bundle
RSLG16	Lattice Girder 16'	4.876	16'	52	109.90	20	Bundle
RSLG17	Lattice Girder 17'	5.18	17'	55.42	122.07	20	Bundle
RSLG21	Lattice Girder 21'	6.39	21'	63.35	139.54	20	Bundle
RSLG28	Lattice Girder 28'	8.52	28'	94	207.05	20	Bundle

Lattice Girder, With Spigot 19.7" (0.5m)

The Lattice Girder is a horizontal member of Ringlock scaffolding that allows for bridging over large spans of 14'-28'.

Steel Grade: S235 or S355. Surface treatment: Hot dip galvanized.



Item No.	Description	Height		Weight (kgs)		Packaging	
		Meters	Feet	Kgs	Lbs	Qty.	Type
RSLGN14	Lattice Girder 14'	4.26	14'	49.10	108.15	13	Bundle
RSLGN17	Lattice Girder 17'	5.18	17'	64.30	141.63	13	Bundle
RSLGN21	Lattice Girder 21'	6.39	21'	70.95	156.28	13	Bundle
RSLGN28	Lattice Girder 28'	8.52	28'	93.00	204.85	13	Bundle

Spigot Adapter Clamp (I-Bolt)

The spigot Adapter Clampp (I-Bolt) allows the connecction of Ringlcok Standards at intermediate locations along the length of O-Type Ledgers, Truss Ledgers and Girders.

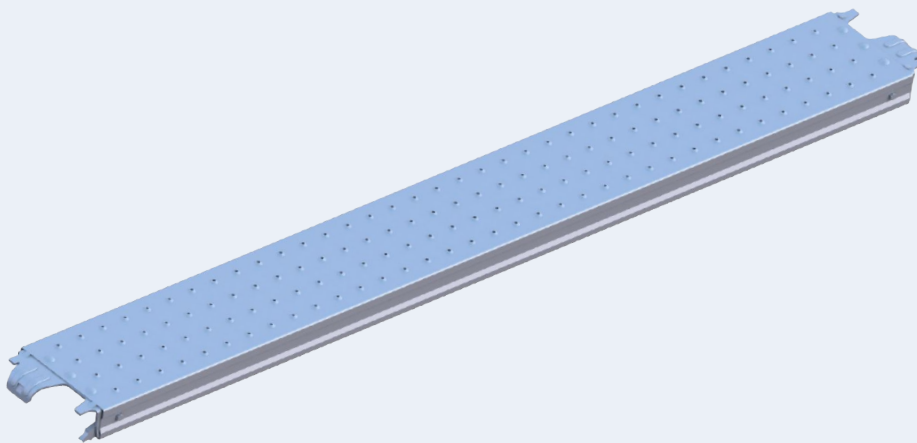


Item No.	Description	Weight (kgs)		Packaging	
		Kgs	Lbs	Qty.	Type
RSC	Spigot Adapter Clamp (I- Bolt)	1.74	3.52	650	Rack+Insert

Work Platforms

[Steel Plank O-Type 9.5" (240mm)]

Ringlock Steel Plank, Width:9.5" (240mm), Height:70mm, Thickness:1.8mm. S235 Steel sheet, Surface treatment: Hot dip galvanized or Pre-galvanized.

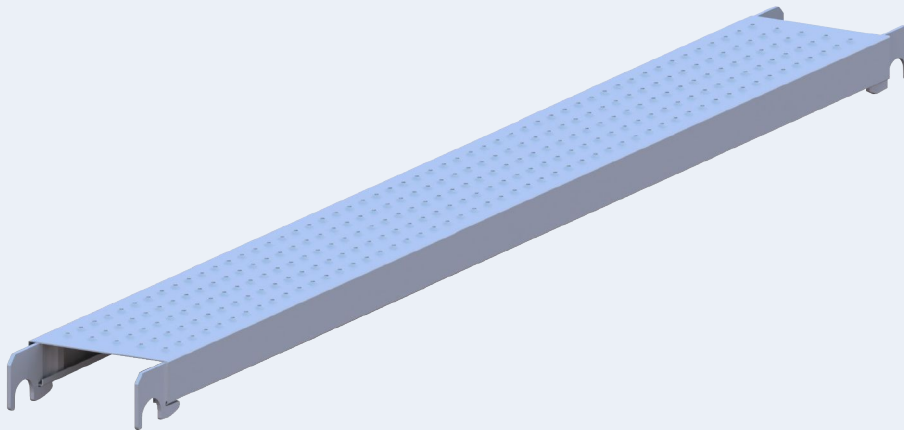


Item No.	Description	Height		Weight (kgs)		Packaging	
		Meters	Feet	Kgs	Lbs	Qty.	Type
RDEP110	1'-11" Low Profile Steel Plank	0.56	1'-11"	4.90	10.79	120	Rack
RDEP22	2'-2" Low Profile Steel Plank	0.65	2'-2"	5.50	12.11	120	Rack
RDEP210	2'-10 5/8" Low Profile Steel Plank	0.88	2'-9"	6.86	15.11	120	Rack
RDEP30	3' Low Profile Steel Plank	0.91	3'-0"	7.04	15.51	120	Rack
RDEP36	3'-6" Low Profile Steel Plank	1.065	3'-6"	7.96	17.53	60	Rack
RDEP310	3'-10" Low Profile Steel Plank	1.15	3'-10"	8.47	18.66	60	Rack
RDEP40	4'-0" Low Profile Steel Plank	1.21	4'-0"	8.82	19.43	60	Rack
RDEP50	5' Low Profile Steel Plank	1.52	5'-0"	10.67	23.50	60	Rack
RDEP52	5'-2" Low Profile Steel Plank	1.57	5'-2"	10.96	24.14	60	Rack
RDEP60	6' Low Profile Steel Plank	1.82	6'-0"	12.45	27.42	60	Rack
RDEP70	7' Low Profile Steel Plank	2.13	7'-0"	14.29	31.48	60	Rack
RDEP80	8' Low Profile Steel Plank	2.43	8'-0"	16.07	35.40	60	Rack
RDEP100	10' Low Profile Steel Plank	3.05	10'-0"	19.75	43.50	60	Rack

Work Platforms

[Steel Plank O-Type 9" (228mm)]

Ringlock Steel Plank, Width:9" (228mm), Height:2.5" (63.5mm), Thickness:1.8mm. S235 Steel sheet, Surface treatment: Hot dip galvanized.



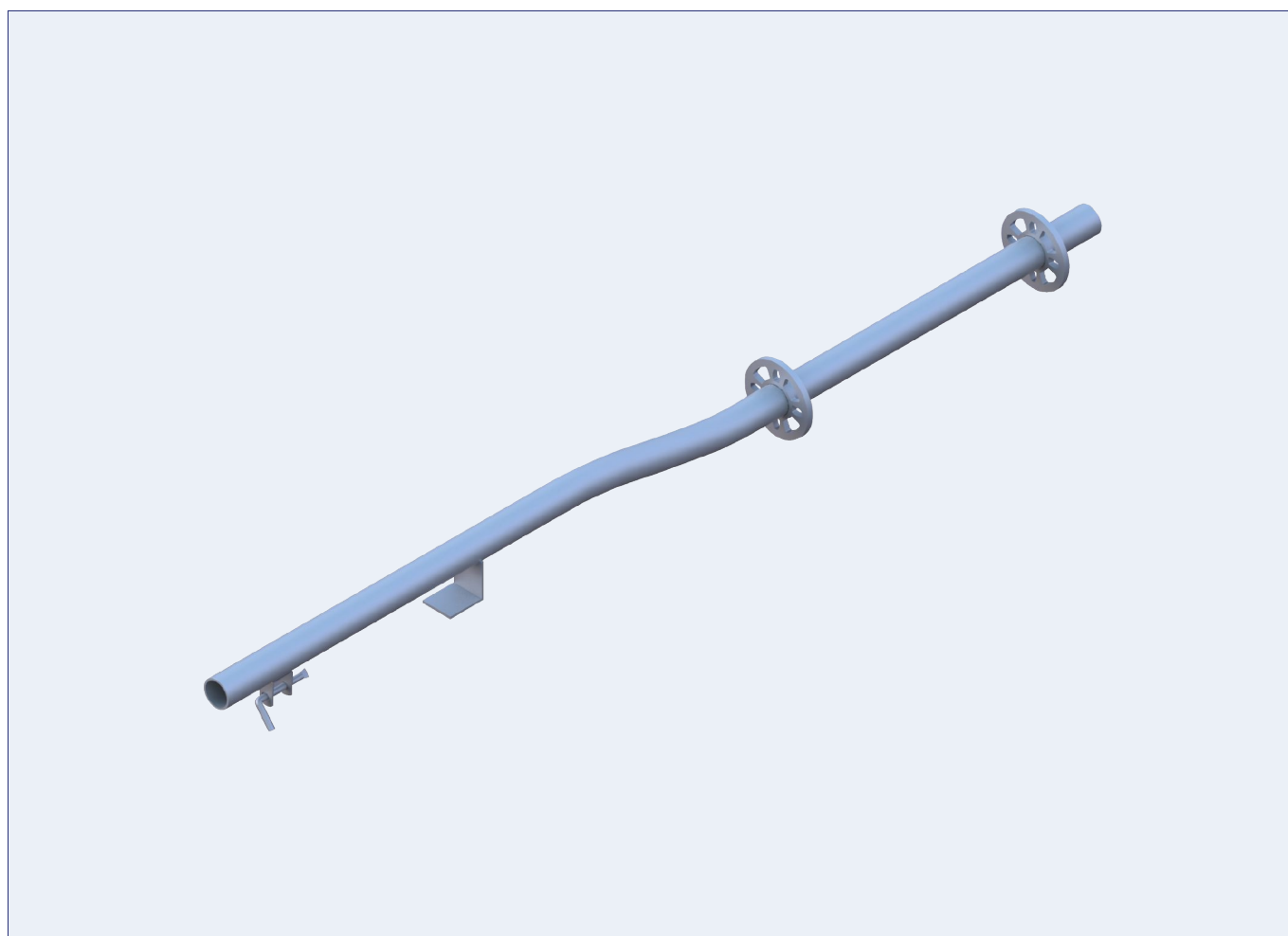
Item No.	Description	Height		Weight (kgs)		Packaging	
		Meters	Feet	Kgs	Lbs	Qty.	Type
RSSP20	2' Steel Plank	0.60	2'	4.78	10.53	128	Rack
RSSP27	2'-7" Steel Plank	0.78	2'-7"	5.82	12.82	64	Rack
RSSP210	2'-10" Steel Plank	0.88	2'-10 5/8"	6.40	14.10	64	Rack
RSSP30	3' Steel Plank	0.91	3'	6.55	14.43	64	Rack
RSSP36	3'-6" Steel Plank	1.065	3'-6"	7.43	16.37	64	Rack
RSSP4	4' Steel Plank	1.22	4'	8.34	18.37	64	Rack
RSSP50	5' Steel Plank	1.52	5'	10.11	22.27	64	Rack
RSSP52	5'-2" Steel Plank	1.57	5'-2"	10.38	22.86	64	Rack
RSSP60	6' Steel Plank	1.82	6'	11.89	26.19	64	Rack
RSSP70	7' Steel Plank	2.13	7'	13.64	30.04	64	Rack
RSSP80	8' Steel Plank	2.43	8'	15.45	34.03	64	Rack
RSSP82	8'-2" Steel Plank	2.5	8'-2"	15.70	34.58	64	Rack
RSSP9	9' Steel Plank	2.74	9'	17.21	37.91	64	Rack
RSSP100	10' Steel Plank	3.05	10'	19.00	41.85	64	Rack

RINGLOCK

Access & Egress

[Guardrail Standard]

The guardrail Standard is designed to provide a vertical connetion to secure Ledger.
Surface treatmnt: Hot dip galvanized

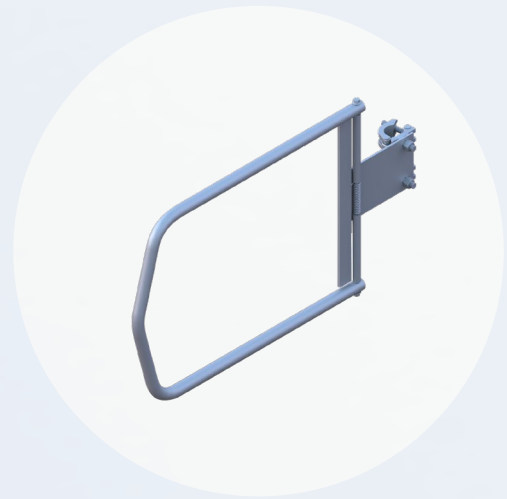
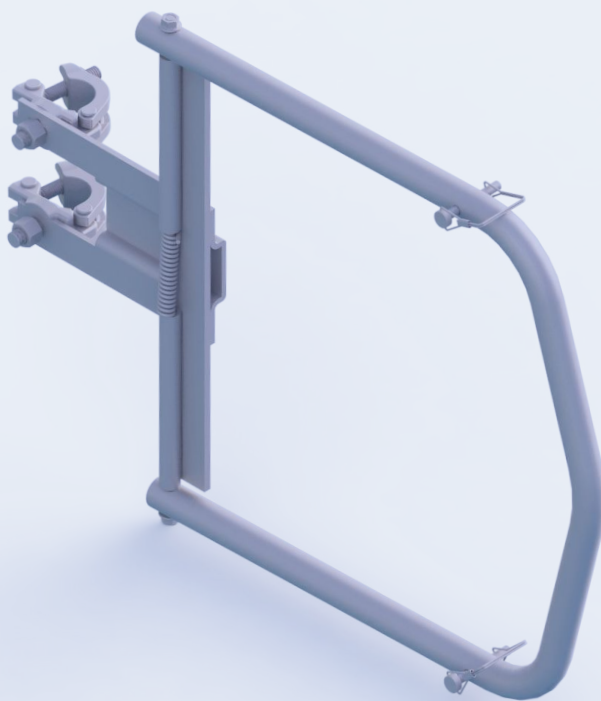


Item No.	Description	Height		Weight (kgs)		Packaging	
		Meters	Feet	Kgs	Lbs	Qty.	Type
RGP	1.7M Guardrail Post	1.7	5'-6"	8.7	19.16	70	Rack

RINGLOCK

Safety Gate

The safety gate allows safe access to the working platform. The sprung gate mechanism ensures that the access opening remains fully closed when the scaffold is in use.

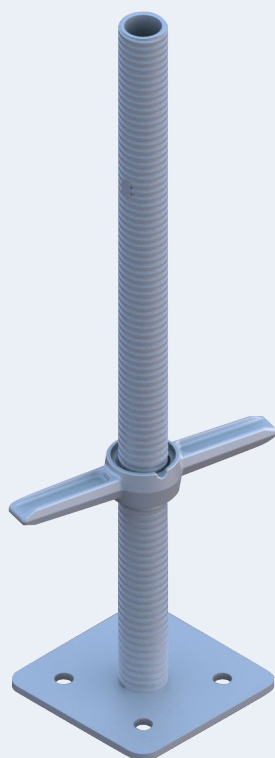


Item No.	Description	Min Extension		Max Extension		Packaging	
		Meters	Inches	Meters	Inches	Qty.	Type
RCW	Gate Expandable Safety Gate 25" to 34"	0.64	25.2	0.81	31.90	36	Rack
RCWL	Gate Expandable Safety Gate 35" to 56"	0.88	34.65	1.4	56.00	36	Rack

RINGLOCK

Adjustable Base Jack

Ringlock adjustable base jack is used for leveling the scaffold-standards at the same height. OD: 38.1x4.5mm. Base plate: 150x150x6mm. Surface treatment: Hot dip galvanized or Electroplated.

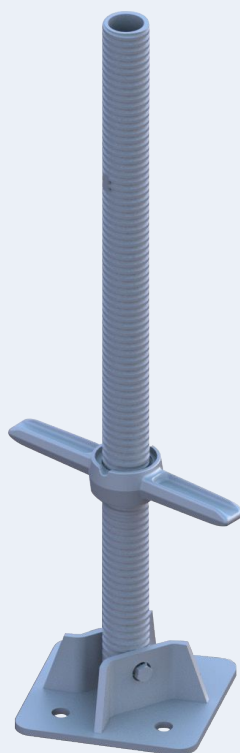


Item No.	Description	Height		Weight (kgs)		Packaging	
		Meters	Feet	Kgs	Lbs	Qty.	Type
CSJB	24" Adjustable Base Jack	0.6	2'	3.4	7.49	220	Rack

RINGLOCK

Swivel Base Jack

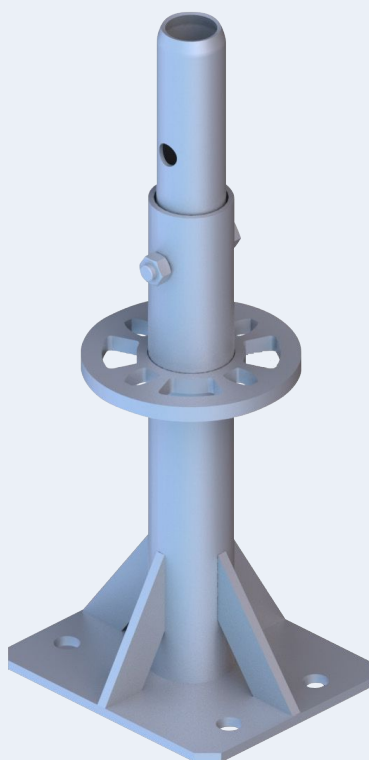
The swivel base jack can be used when standards need to be placed on slopes. OD: 38.1x4.5mm. Base plate: 150x150x6mm. Surface treatment: Hot dip galvanized or Electroplated.



Item No.	Description	Height		Weight (kgs)		Packaging	
		Meters	Feet	Kgs	Lbs	Qty.	Type
CSJS	24" Swivel Base Jack	0.6	2'	3.7	8.15	220	Rack

Adjustable Caster Adapter

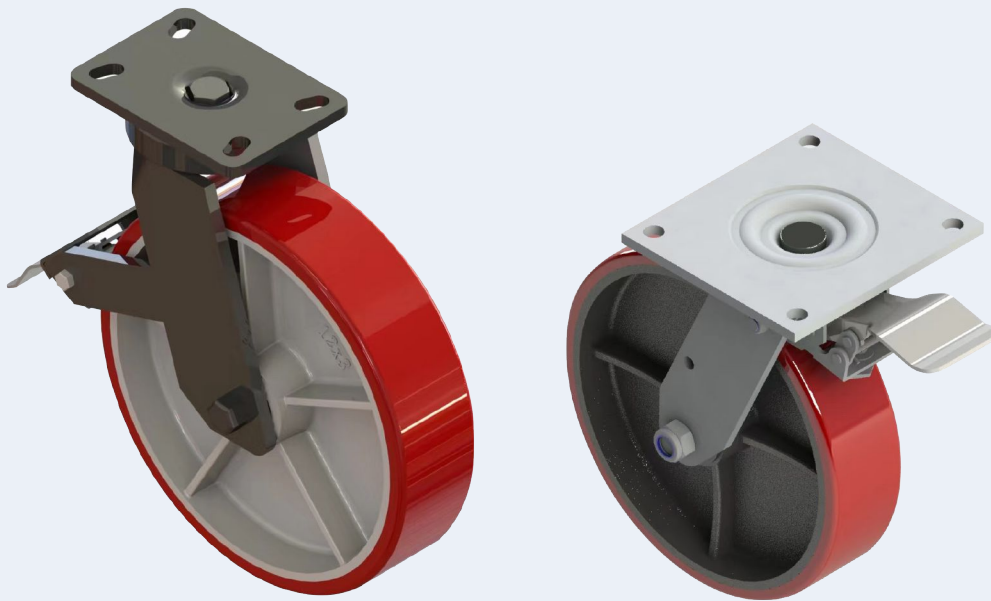
Caster Adapter is mainly used for connecting caster wheel to the vertical pole.



Item No.	Description	Height		Weight (kgs)		Packaging	
		Meters	Feet	Kgs	Lbs	Qty.	Type
RACA	Adjustable Caster Adapter	0.249	9.75"	4.02	8.85	144	Rack + Insert

Caster Wheel

Scaffolding caster wheel is used at bottom of scaffolding vertical tube, enabling the scaffolding system to be a mobile Platform.

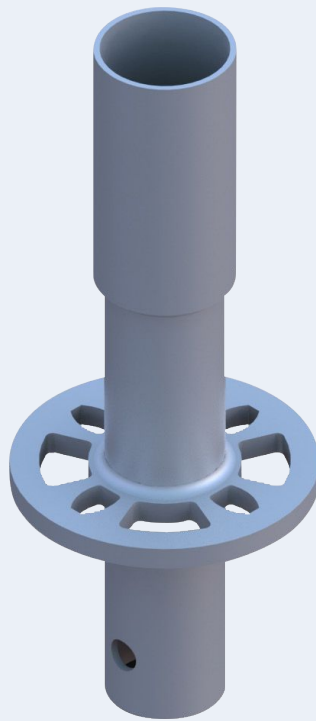


Item No.	Description	Weight (kgs)		Packaging	
		Kgs	Lbs	Qty.	Type
RACA8	8" Adjustable Caster Adapert	3.84	8.46	144	Rack+Insert
RACA12	12" Adjustable Caster Adapert	4.02	8.85	144	Rack+Insert

RINGLOCK

Starter/ Base Collar

The base collar is the beginning of the Ringlock scaffolding system. It sits upon a fixed or adjustable base.

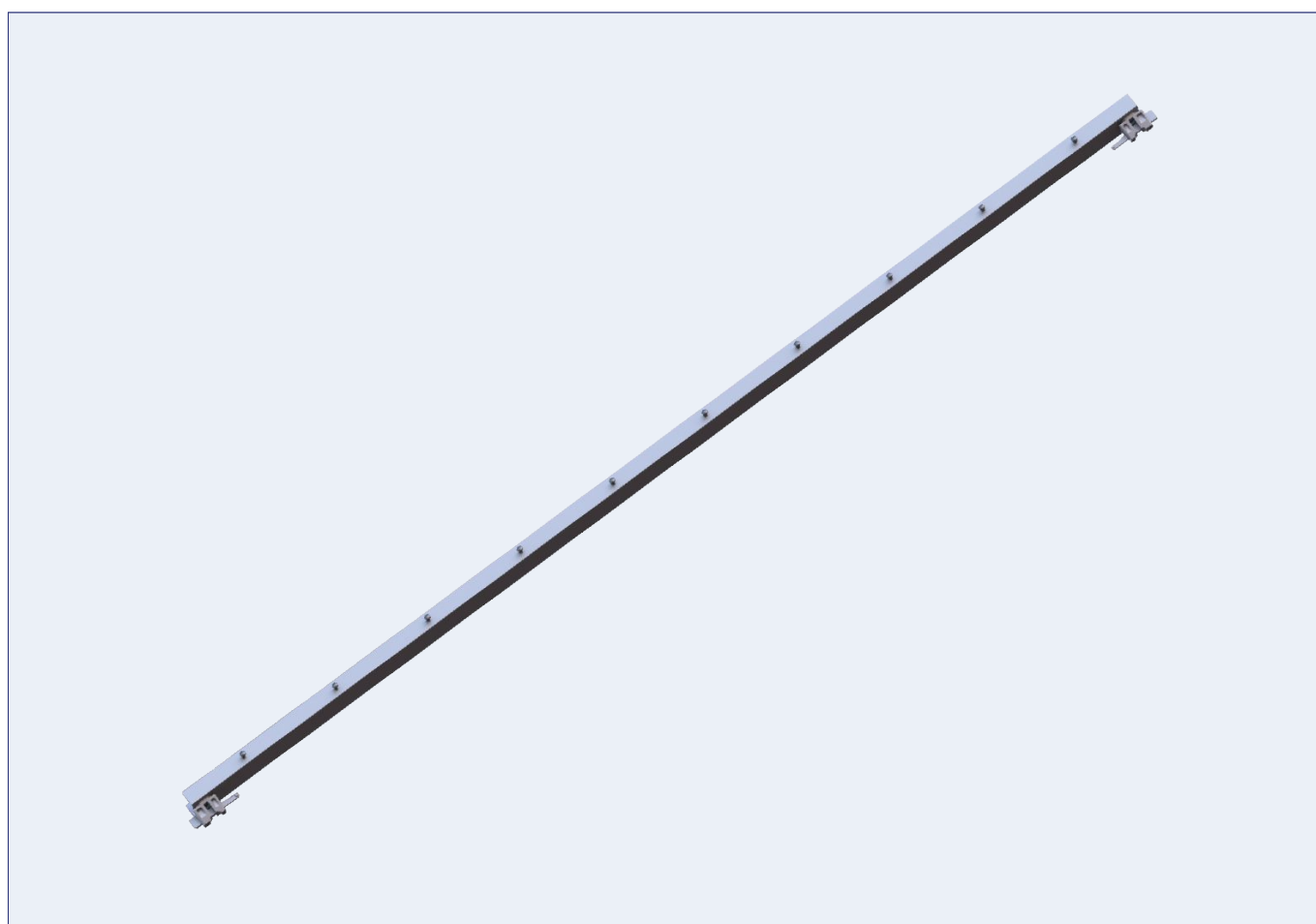


Item No.	Description	Height		Weight (kgs)		Packaging	
		Meters	Feet	Kgs	Lbs	Qty.	Type
RSBC	Starter/Base Collar	0.3	1'-0"	1.80	3.96	385	Rack

RINGLOCK

Staircase and Steps

Ringlock Staircase tower incorporate purpose designed stairway unites and offer a safer, quicker, more efficient route between levels on site.

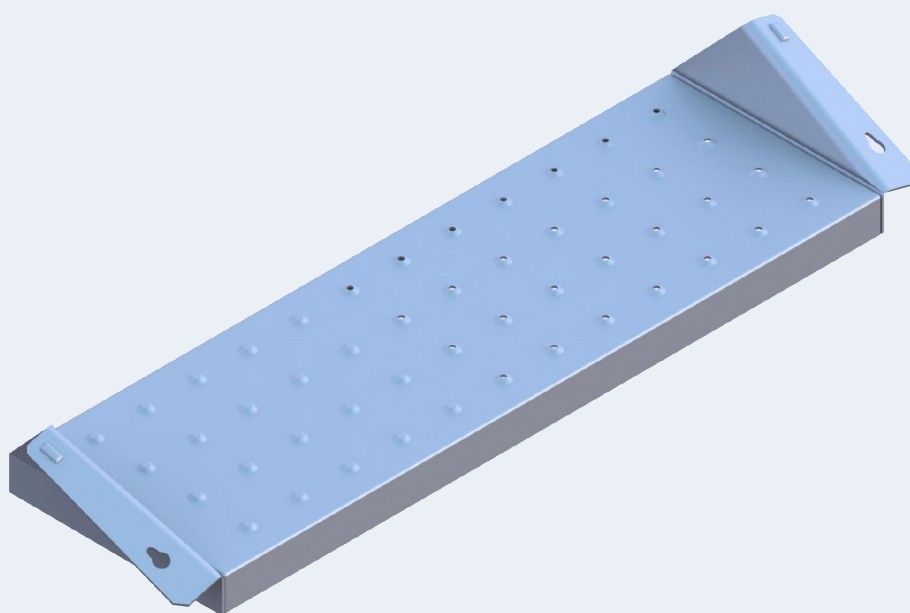


Item No.	Description	Height		Weight (kgs)		Packaging	
		Meters	Feet	Kgs	Lbs	Qty.	Type
RSS106	Stair Stringer (1.0m lift)	1.065	3'-6"	8.95	19.71	110	Rack
RSS213	Stair Stringer (2.0m lift)	2.13	7'	15.95	35.13	110	Rack

RINGLOCK

Stair Tread

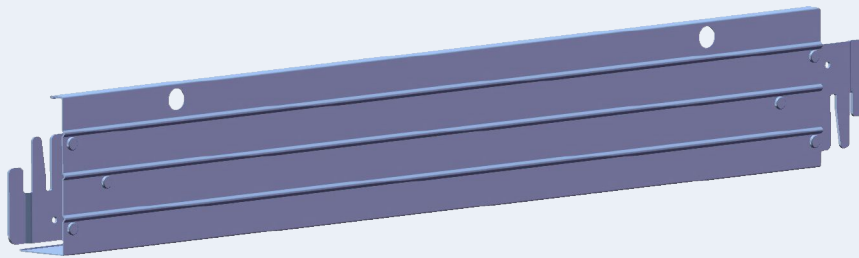
The stair tread is designed as the horizontal member connecting to the stair stringers (both 1.0m and 2.0m lift) providing the steps of the stair system.



Item No.	Description	Height		Weight (kgs)		Packaging	
		Meters	Feet	Kgs	Lbs	Qty.	Type
RST850	32" Stair Tread, match with 42" ledger	0.852	33.54"	8.15	17.95	69	Rack + Insert
RST810	32" Stair Tread, match with 42" ledger	0.81	32"	7.51	16.54	69	Rack + Insert

Interlocking Toeboard

The interlocking toeboard is designed as the horizontal member connecting to provide a protection for scaffolding tools.

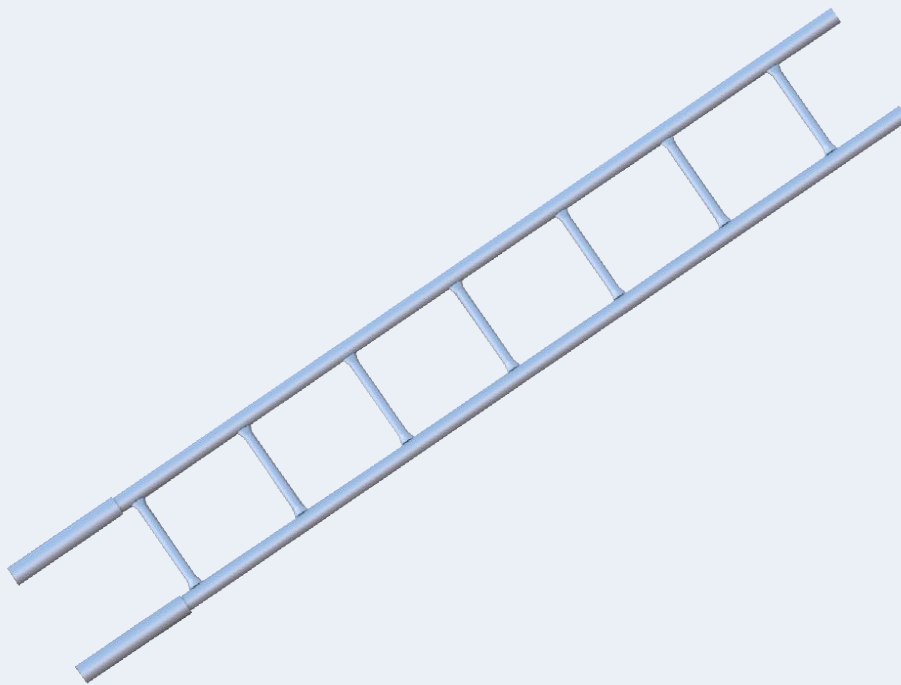


Item No.	Description	Height		Weight (kgs)		Packaging	
		Meters	Feet	Kgs	Lbs	Qty.	Type
RSITB22	2'-2" Interlocking Toeboard	0.65	2'-2"	2.39	5.26	400	Rack
RSITB210	2'-10" Interlocking Toeboard	0.88	2-10 5/8"	3.04	6.70	400	Rack
RSITB30	3' Interlocking Toeboard	0.91	3'-0"	3.13	6.89	400	Rack
RSITB36	3'-6" Interlocking Toeboard	1.065	3'-6"	3.58	7.89	200	Rack
RSITB310	3'-10" Interlocking Toeboard	1.15	3'-10"	3.84	8.46	200	Rack
RSITB50	5' Interlocking Toeboard	1.52	5'-0"	4.94	10.88	200	Rack
RSITB52	5'-2" Interlocking Toeboard	1.57	5'-2"	5.08	11.19	200	Rack
RSITB60	6' Interlocking Toeboard	1.82	6'-0"	5.85	12.89	200	Rack
RSITB70	7' Interlocking Toeboard	2.13	7'-0"	6.74	14.85	200	Rack
RSITB80	8' Interlocking Toeboard	2.43	8'-0"	7.65	16.85	200	Rack
RSITB10	10' Interlocking Toeboard	3.05	10'-0"	9.45	20.81	200	Rack

RINGLOCK

Ladder

The Ladder is designed to attach (using Ladder Brackets) on the inside or outside of a scaffold to provide safe access to the various deck levels.

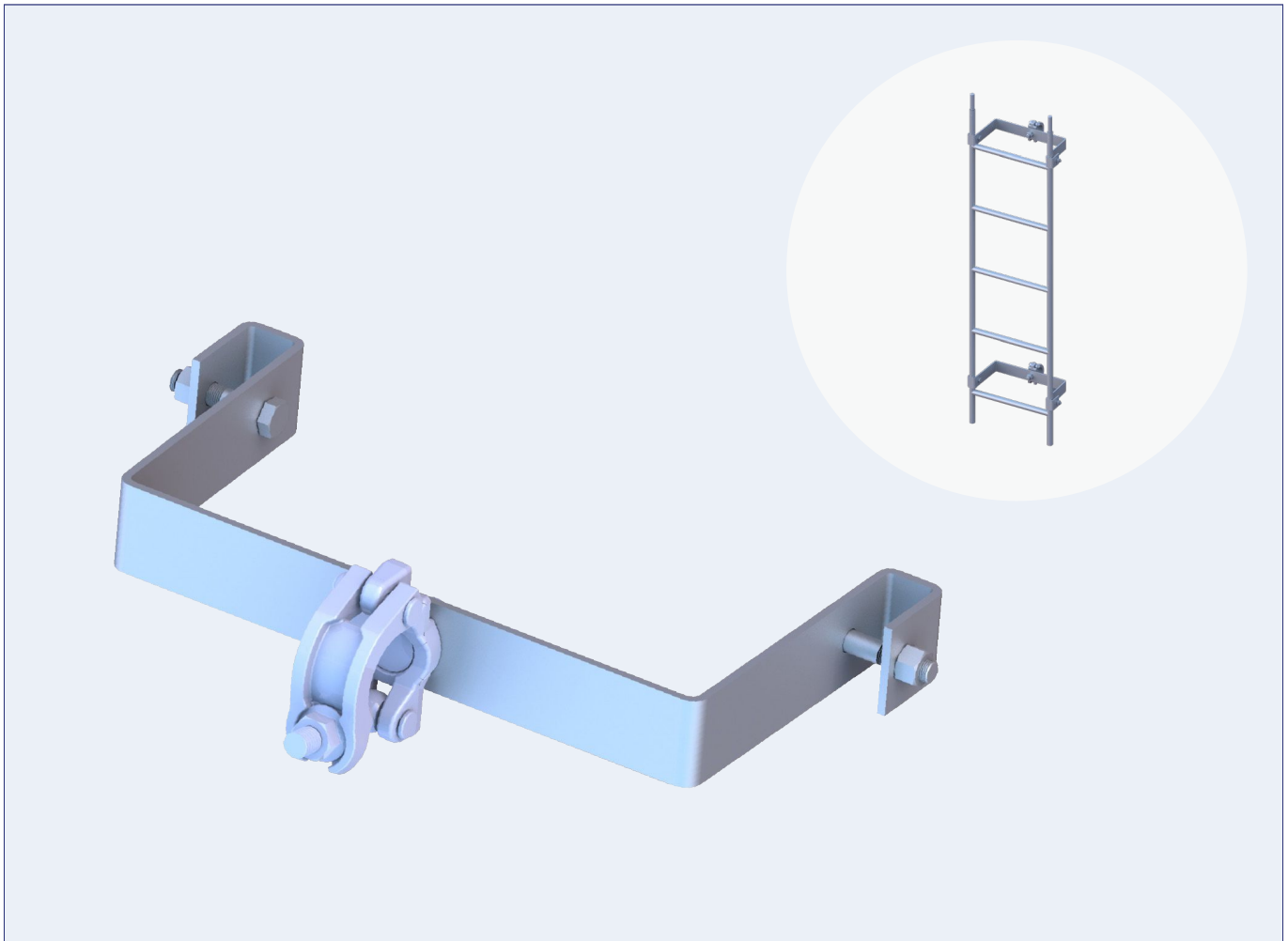


Item No.	Description	Height		Weight (kgs)		Packaging	
		Meters	Feet	Kgs	Lbs	Qty.	Type
RSAL03	Ladder	0.91	3'	6.53	14.39	25	Bundle
RSAL05	Ladder	1.52	5'	10.22	22.51	25	Bundle

RINGLOCK

Ladder Bracket

The Ladder bracket is designed to attach the ladders to the vertical or horizontal members of the scaffold tower.



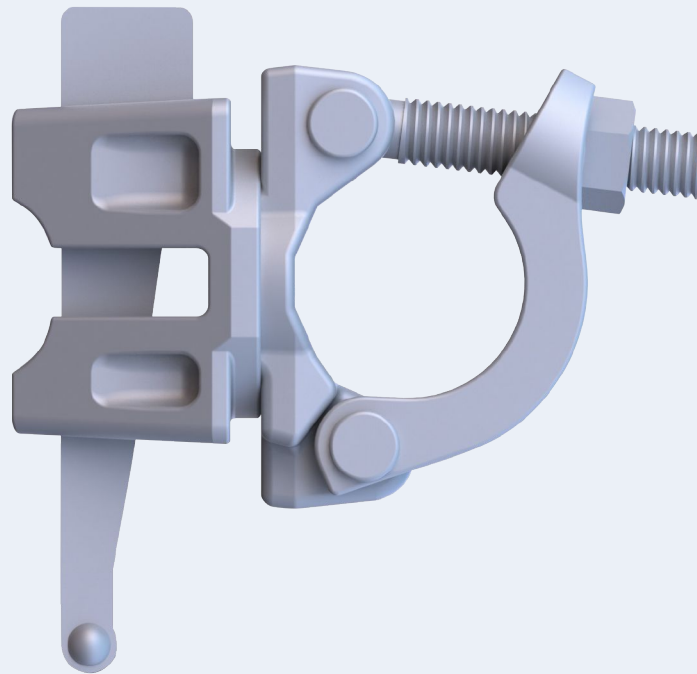
Item No.	Description	Height		Weight (kgs)		Packaging	
		Meters	Feet	Kgs	Lbs	Qty.	Type
RSALB	Ladder Bracket 22mm	0.43	17"	3.18	7.00	170	Rack+Insert
RSALBW	Ladder Bracket Wedge	0.43	17"	3.23	7.11	170	Rack+Insert

RINGLOCK

Ringlock Accessories

[Right Angle Adapter Clamp]

The right angle wedge head coupler is designed to easily join a scaffold tube directly to the rosette at 90 degrees.



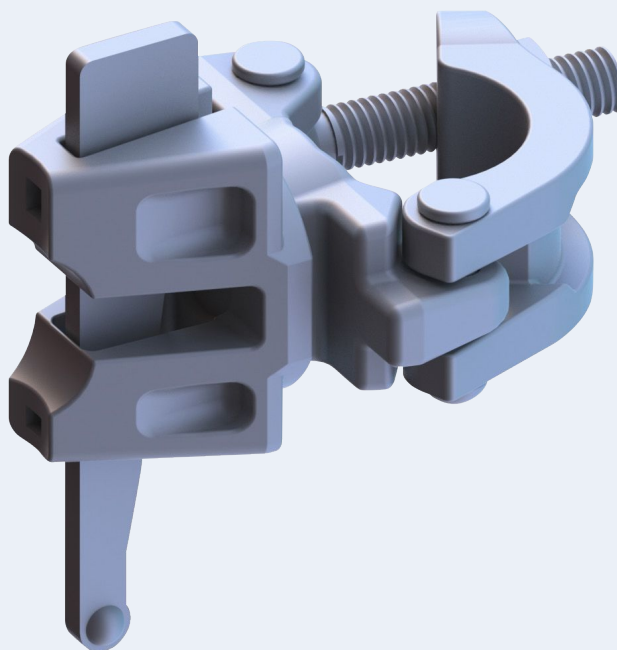
Item No.	Description	Weight (kgs)		Packaging	
		Kgs	Lbs	Qty.	Type
RWR	Wedge head coupler, right angle, 1 bolt	1.80	3.96	650	Rack + Insert

RINGLOCK

Ringlock Accessories

[Wedge head swivel coupler]

The swivel adapter clamp is designed to easily join a scaffold tube to the rosette of a Ringlock scaffold producing a variety of angles and configurations.



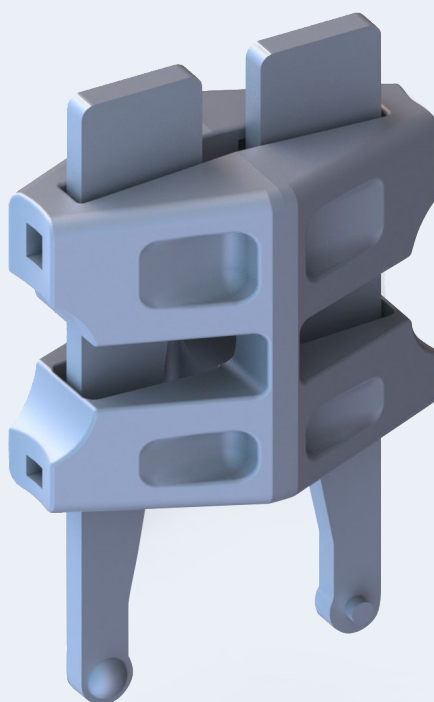
Item No.	Description	Weight (kgs)		Packaging	
		Kgs	Lbs	Qty.	Type
RWS	Wedge head coupler, swivel, 1 bolt	1.8	3.96	650	Rack + Insert

RINGLOCK

Ringlock Accessories

[Wedge head coupler]

Wedge head coupler allows the connection of ringlock standards to enforce its strength.



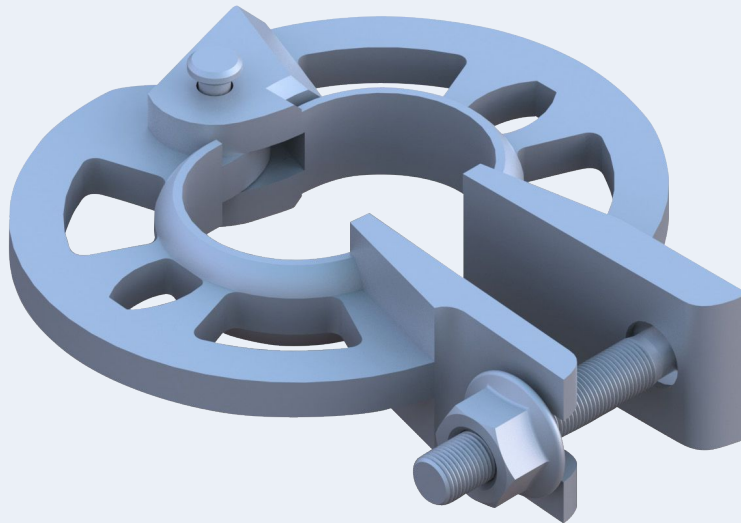
Item No.	Description	Weight (kgs)		Packaging	
		Kgs	Lbs	Qty.	Type
WHC	Wedge head coupler	1.2	2.64	650	Rack + Insert

RINGLOCK

Ringlock Accessories

[Rosette Clamp]

The rosette clamp is used to add a rosette at any point on a vertical standard or tube.



Item No.	Description	Weight (kgs)		Packaging	
		Kgs	Lbs	Qty.	Type
RRC	Rosette Clamp, 22mm	1.2	2.64	750	Rack + Insert

RINGLOCK

Ringlock Accessories

[Right Angle Clamp]

The right angle wedge head coupler is designed to easily join a scaffold tube directly to the rosette at 90 degrees.



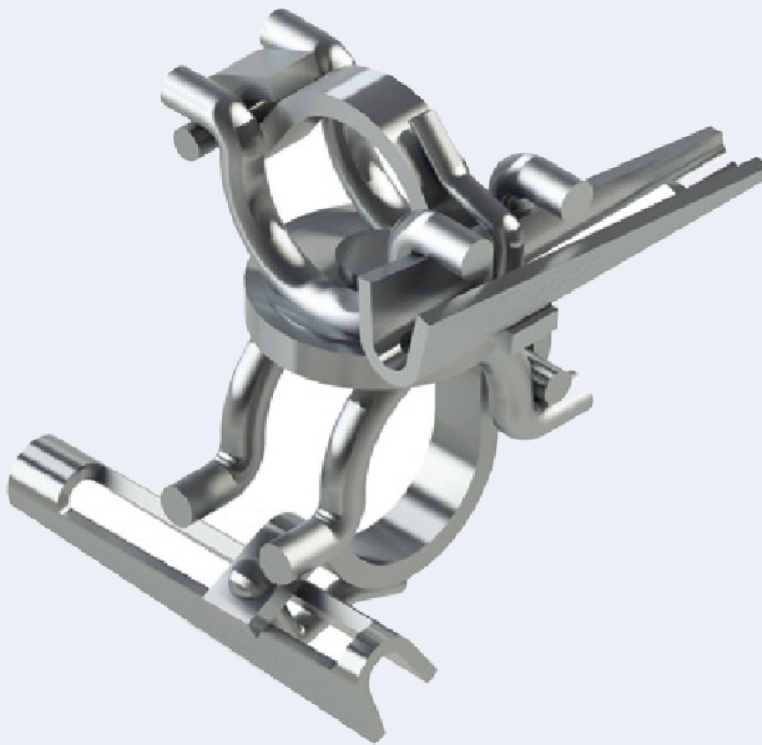
Item No.	Description	Weight (kgs)		Packaging	
		Kgs	Lbs	Qty.	Type
RCA	Right Angle Clamp (Wedge)	1.5	3.30	500	Rack + Insert

RINGLOCK

Ringlock Accessories

[Swivel Clamp (Wedge)]

The swivel adapter clamp is designed to easily join a scaffold tube to the rosette of a Ringlock scaffold producing a variety of angles and configurations.



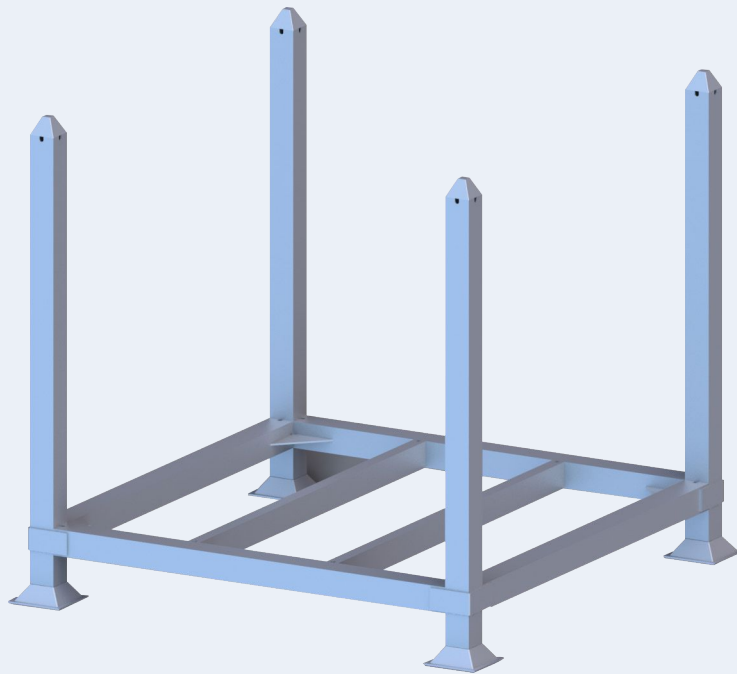
Item No.	Description	Weight (kgs)		Packaging	
		Kgs	Lbs	Qty.	Type
RCS	Swivel Clamp (Wedge)	1.69	3.72	500	Rack + Insert

RINGLOCK

Ringlock Accessories

[Scaffold Rack]

The scaffold rack is designed to load scaffolding components for transportation.



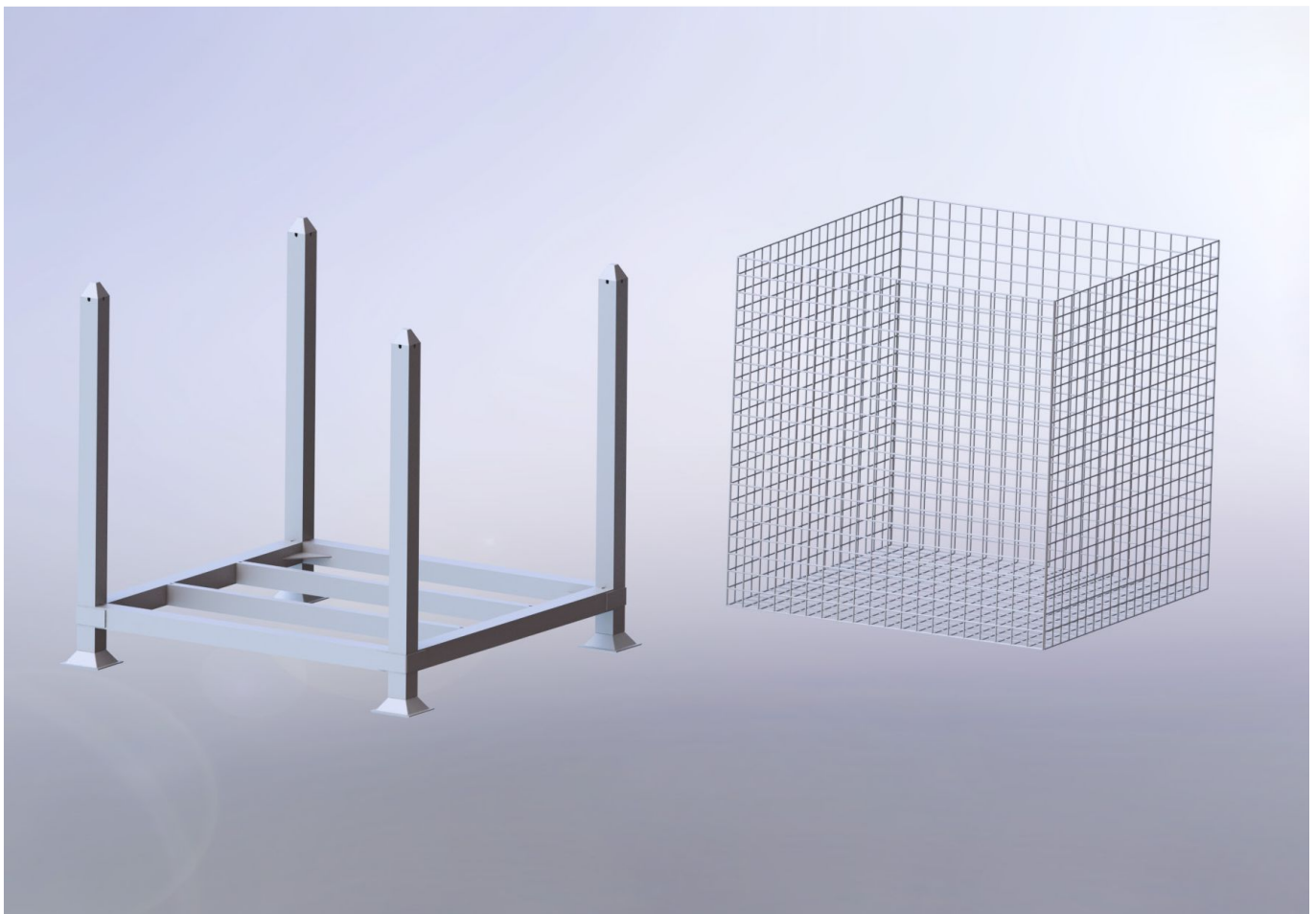
Item No.	Description	Weight (kgs)		Packaging	
		Kgs	Lbs	Qty.	Type
CSR	Scaffold Rack 44"X 44"X34.25"	46	101.32	1	Rack

RINGLOCK

Ringlock Accessories

[Scaffold Cage Insert]

The scaffold cage insert is designed to fit into the storage rack, to create the Basket for storage of clamps and accessories.



Item No.	Description	Weight (kgs)		Packaging	
		Kgs	Lbs	Qty.	Type
CSCI	Scaffold Cage Insert (44"*44"*34")	23.45	51.65	1	Rack

RINGLOCK

Ringlock Accessories

[Right Angle Clamp (I-Bolt)]

The right angle clamp (I-Bolt) is designed to be used in conjunction with scaffold tube to create 90 degree angles.



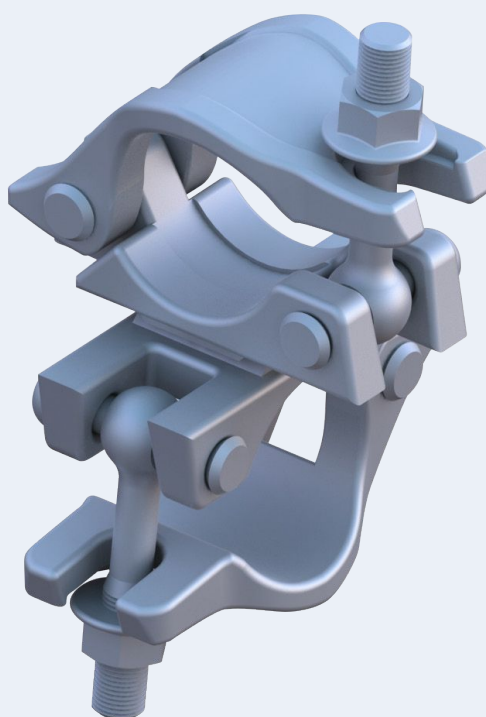
Item No.	Description	Weight (kgs)		Packaging	
		Kgs	Lbs	Qty.	Type
RCA	Right Angle Clamp	1.48	3.30	700	Rack + Insert

* Product available in a Nut Size of 21mm (UK), 22mm (7/8" N. America) and 23mm (Aus.)

Ringlock Accessories

[Swivel Clamp (I-Bolt)]

The swivel clamp (I-Bolt) is designed to be used in conjunction with scaffold tube to create a variety of angles.



Item No.	Description	Weight (kgs)		Packaging	
		Kgs	Lbs	Qty.	Type
RCS	Swivel Clamp	1.83	4.03	700	Rack + Insert

* Product available in a Nut Size of 21mm (UK), 22mm (7/8" N. America) and 23mm (Aus.)

RINGLOCK SYSTEM

North America

[CHINA]

5 Xinghan Street, Suzhou, Jiangsu 215021

[USA]

LA, USA: 343 Phosphor Ave, Metairie LA. 70005.

Tel: +1-504-432-1124 Jose Chaumont.

Utah, USA: 6225 S High Blu Dr., West Valley Utah 84118.

Tel: +1-866-300-6688 Jim Fraser.

TX, USA: 4740 Ingersoll St, Suite 102 Houston TX 77027.

Tel: +1-504-432-1124 Jose Chaumont.

[CHILE]

Tel: +56 978 082717 Bernardo Gutiérrez

[EMAIL]

coronet@coronet-scaffold.com

[WEB]

www.coronet.com / www.coronet-scaffold.com

We are the leading scaffolding supplier.